

November 8, 2023

---

# *Distinguishing TCU Research*



**Floyd L. Wormley Jr., Ph.D.**

Associate Provost for Research and Dean of Graduate Studies

**Stuart Flynn, M.D.**

Dean, Anne Burnett Marion School of Medicine

**Christopher Watts, Ph.D.**

Marilyn & Morgan Davies Dean, Harris College of Nursing & Health Sciences

# Research and Creative Activity is interwoven throughout our Mission, Vision and Values

## MISSION

The mission of Texas Christian University, a private comprehensive university, is to **educate individuals** to **think** and **act** as **ethical leaders** and **responsible citizens** in the **global community** through **research and creative activities, scholarship, service, and programs of teaching and learning offered through the doctoral level.**

## VISION

To be a world-class, values-centered university

## VALUES

At TCU, we value:

- Academic and personal achievement
- **Intellectual inquiry and the creation of knowledge**
- **Artistic and creative expression**
- A heritage of **service in pursuit of the greater good**
- Personal freedom and integrity
- The dignity of and respect for the individual
- Active appreciation for the array of human experience and the potential of every human being



# Why Engage in Research?

## TCU Mission

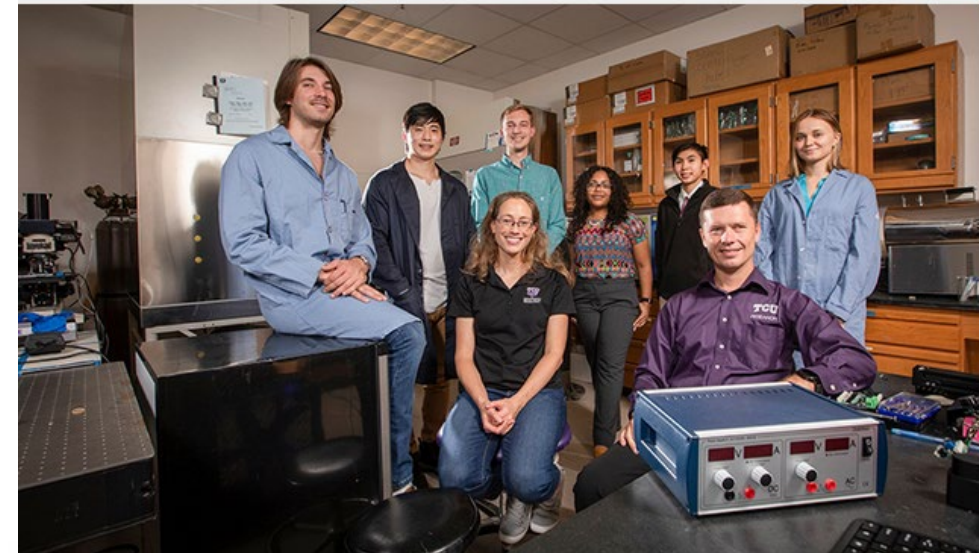
- Learning, intellectual inquiry, creation of new knowledge, artistic, creative expression, etc.

## Teacher/Scholar Model

- Hiring top faculty
- Recruiting top students
- Graduating top students (retention and graduation rates)

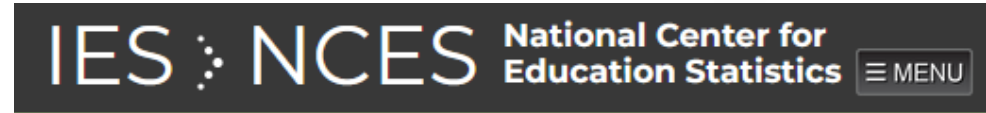
## Skills important for career and professional development

- Critical thinking, hands-on experience, teamwork, resume/CV builder, GRIT
- Job placement and top salaries
- Student success and social mobility



*Professors Shauna McGillivray and Anton Naumov (seated in chairs) mentor several students, including (l-r) Ryan McKinney, Bong Lee, Alex Caron, Charna Kinard, Steven Nguyen and Alina Valimukhametova in pursuing science and engineering research from different perspectives. The students range from post-graduate to high school level and all have access to real research.*

# Rankings and Academic Profile



## What is the HERD Survey?

The Higher Education Research and Development (HERD) Survey collects information from U.S. colleges and universities that have spent at least \$150,000 for R&D that has been separately accounted for in the past fiscal year. It is conducted by the National Center for Science and Engineering Statistics (NCSES) within the National Science Foundation.





# National Spotlight Heightens Academic Profile and Reputation

## ‘Time to Change the Model’ – Burnett School of Medicine at TCU Four Years In

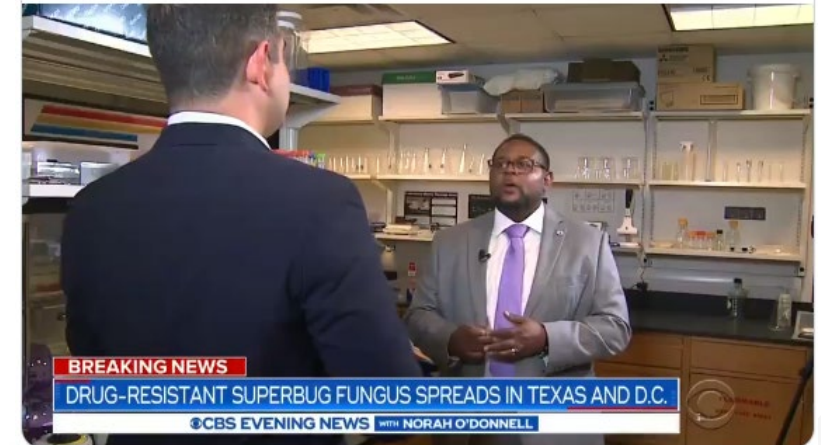
Founding Dean Stuart Flynn spoke with D CEO Healthcare about the inaugural class, the school's growing reputation, and training empathetic physicians.

The program can be seen this Friday, July 29 at 10 p.m. CDT on CNN or anytime on Hulu.

#TCULiberalArts



CBS Evening News @CBSEveningNews · Jul 23, 2021  
SUPERBUG FUNGUS: The CDC is warning of an outbreak of a drug-resistant superbug fungus that's been spreading to people in D.C. and Texas.





# A History of Excellence: Keeping Forward Momentum



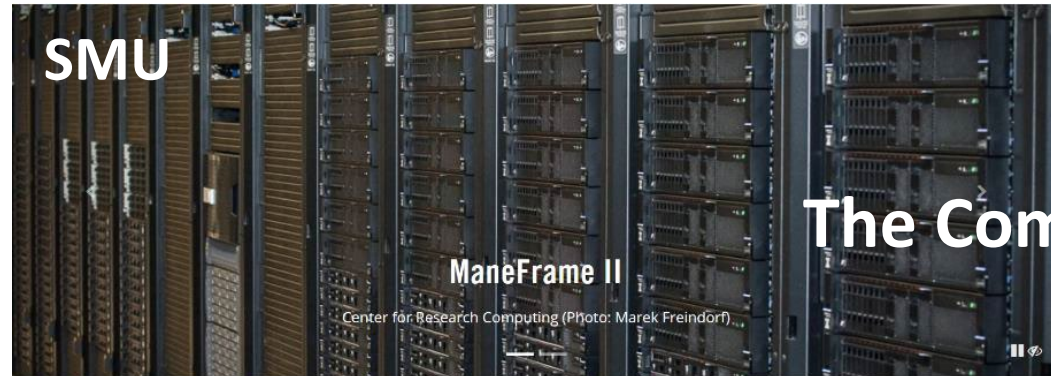
## Our History

Since our earliest years, TCU has embraced a rich tradition of athletic excellence.

In 2020-21, Horned Frogs won Big 12 championships in three sports



## Our Future



Center for Research Computing

## The Competition



American University's Hall of Science 2020

CENTER FOR RESEARCH  
COMPUTING





# Be Intentional About Research Direction: High-impact research that distinguishes TCU over our peers



The mainstreaming of additive manufacturing

Career Areas Home | Artificial Intelligence & Machine Learning Careers

## Artificial Intelligence & Machine Learning

Enabling Humans and Machines to Work Together

[EXPLORE OPEN POSITIONS IN AI & MACHINE LEARNING →](#)

A banner for Artificial Intelligence & Machine Learning careers. It features a background image of a person in a blue lab coat working with a piece of machinery in a factory or laboratory setting. The text is overlaid on the left side of the image.

Center for Supply Chain Innovation



**TCU**  
LEAD ON.



# Distinguishing TCU Research

Emerging areas of medical research that can distinguish TCU apart from our peers and significantly enhance TCU's academic reputation and profile.

**Stuart Flynn, M.D.**

Dean, Anne Burnett Marion School of Medicine

**Christopher Watts, Ph.D.**

Marilyn & Morgan Davies Dean

Harris College of Nursing & Health Sciences





November 8, 2023

---

# *Research Questions*

**Floyd L. Wormley Jr., Ph.D.**

Associate Provost for Research and Dean of Graduate Studies

**Stuart Flynn, M.D.**

Dean, Anne Burnett Marion School of Medicine

**Christopher Watts, Ph.D.**

Marilyn & Morgan Davies Dean, Harris College of Nursing & Health Sciences

